

LABOUR PRODUCTIVITY

The key to increasing business performance



There are many factors that influence productivity, one of the major ones being employee performance (labour), which can significantly impact the overall success of a business. What's more, remuneration of that labour force often comprises a sizable portion of operational costs. Labour is therefore a good place to start when seeking to improve productivity in a sustainable manner.

Embarking on an organisation wide labour productivity improvement agenda is a daunting task, which is why BDO have developed a Labour Productivity Framework (represented diagrammatically below) to drive the development, implementation and assessment of a labour productivity improvement program.

Labour Productivity Survey

Integral to BDO's propriety framework is the comprehensive labour productivity survey. The results of which, enable the unique productivity profile of your organisation to be established:

Allowing you to:

- Determine what an effective Australian workforce looks like in your industry and peer group
- Identify areas for improvement and/or opportunity
- Make comparisons to the productivity profiles of market peers
- Benchmark against best practice.

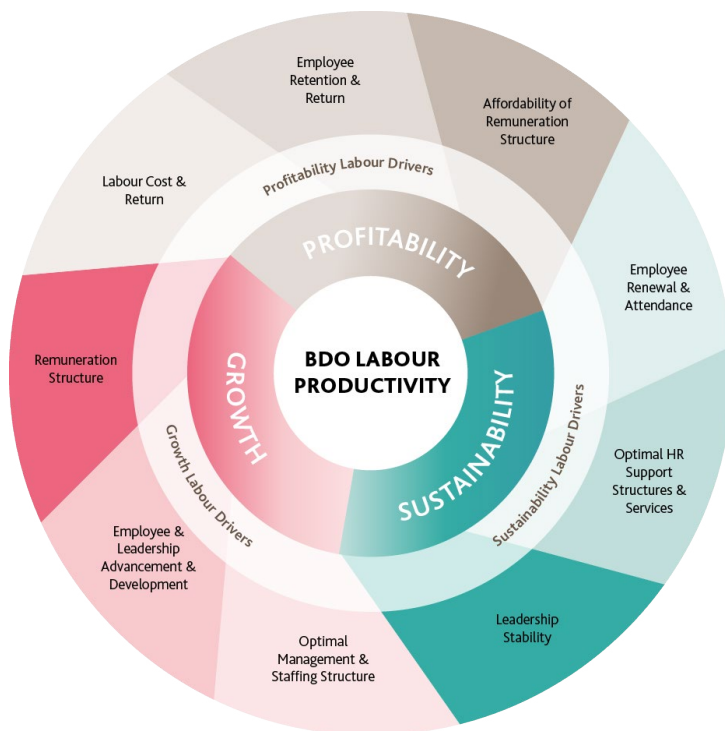
To find out more information on the Labour Productivity Survey and how it can help your business:



ALLAN FEINBERG
 Managing Director
BDO Remuneration and Reward

allan.feinberg@bdo.com.au
 Office: + 61 8 6382 4600
 Mobile: + 61 418 575 725

www.bdo.com.au/services/advisory/remuneration-reward



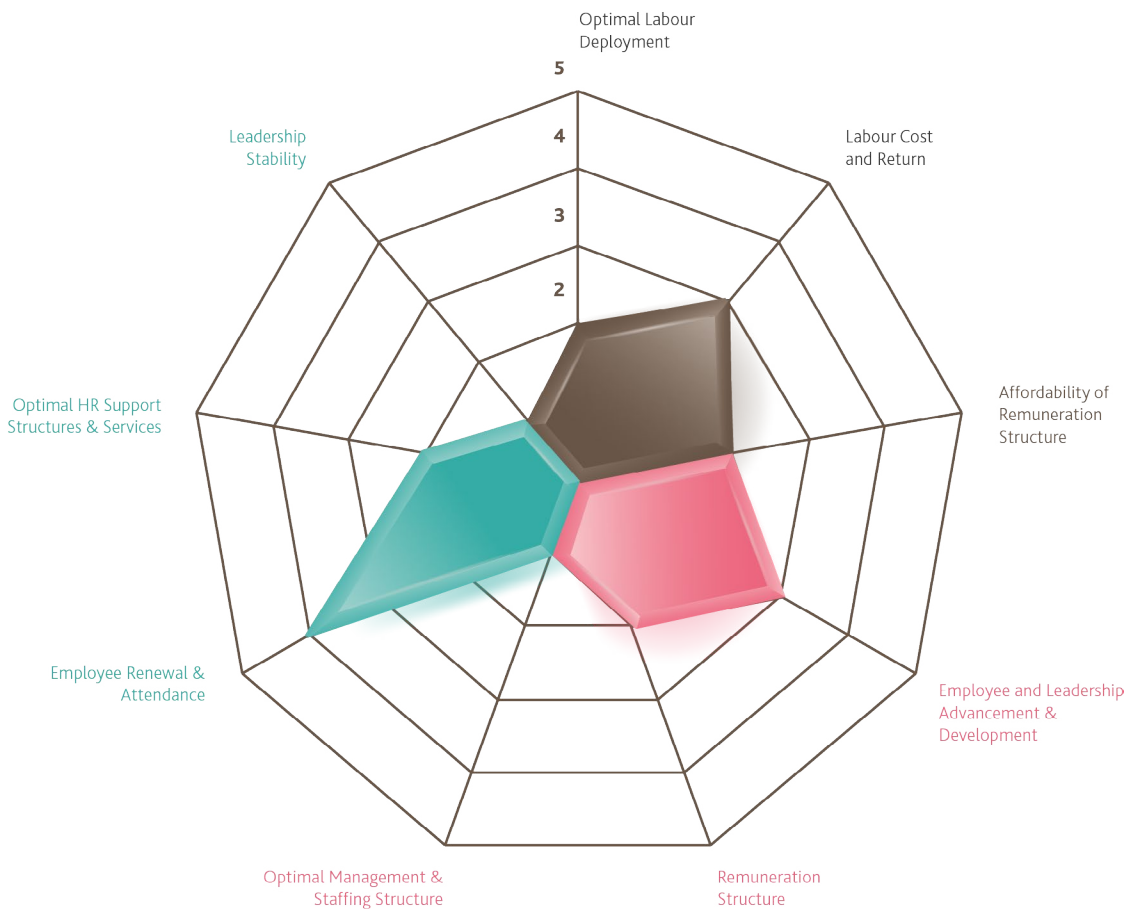
Workforce Productivity Profile

Why should you have one?

Analysis of the survey data lets us work with you to develop your organisation's unique productivity agenda, based on the specific drivers identified via the survey results.

We will then be able to design and implement an affordable and effective remuneration structure which correlates to the labour productivity framework, allowing you to accurately answer important questions like:

- What does an optimal organisational structure look like in my sector, for my company's size?
- How many people should we have in our finance team?
- What processes should we have in place to optimise our structure?



MORE INFORMATION

1300 138 991
www.bdo.com.au

NEW SOUTH WALES
 NORTHERN TERRITORY
 QUEENSLAND
 SOUTH AUSTRALIA
 TASMANIA
 VICTORIA
 WESTERN AUSTRALIA